

Verizon Communications Inc.
 Latest Results: Q4 2013
 Country: USA
 Sector: Telecoms
 RIC (Ticker): VZ.N

Fundamental Valuation: --
Indigo View: --
Industry View: **Neutral**
Company Rating:

	LOW	MED.	HIGH
Risk			
Quality			
Valuation			

N. Landell-Mills CFA
 Indigo Equity Research Limited
 www.indigo-equity-research.com

01 Feb 2014

Snapshot of Q4 2013 - Outlook uncertain

Mixed Q4 2013 Results - Wireless momentum slows

Indigo's independent, buy-side, fundamental equity research reports are provided in three formats (of varying length & detail):

- Snapshot (c. 6 pages)
- Overview (c. 20 pages)
- Company Profile (52 pages)

Indigo Reports can be accessed via the Independent Research Services at Marex Spectron: (www.marexspectron.com)
 Contact: Edward Blad (EBlad@marexspectron.com)

Or Indigo reports can be purchased via subscription or a pay-per-view basis, from the Indigo website: www.indigo-equity-research.com

Significant recent events

- See the full report
-

Investment thesis - Dominant position but unclear long-term prospects

See the full report

SWOT analysis

Strengths

- Large size (economies of scale).
- Leading mobile market share.
- Strong recurring revenues & FCF.

Opportunities

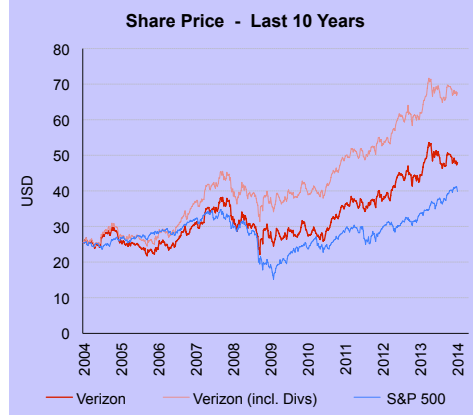
- New data services eg. FIOS & LTE.
- Purchase of 45% of Verizon Wireless.
- Connected cars & homes?

Weaknesses

- Mature US telecoms market.
- Pension deficit?
- Wireline is loss making.

Threats

- Increasing competition.
- Becoming a "dumb pipe".
- Slowing revenue growth.



Fundamental Valuation

	Bear	Base	Bull
Forecast Share Price	See the full report		
Return (incl. Div.)			
Capital Structure		Per Share (\$)	Total (\$ Bn)
Current Share Price		\$48.0	
Number of Shares (bn)			2.9
Market Capitalization			138.0
Net Cash / (Debt)		-13.7	-39.5
Enterprise Value (EV)		42.0	120.9
Main Shareholder:			--

Consensus Estimates

Financial Results	2013	2014e	2015e
y/e 31 Dec (\$ Bn)			
Revenue	120.6	125.1	129.2
EBIT*	25.5	27.9	30.0
Net Income*	7.9	10.0	15.9
Share Capital	38.8	42.8	52.8
Total Assets	274.1	278.5	288.8
FCF	21.6	8.7	14.7
EPS* (\$)	2.75	3.49	5.53
DPS (\$)	2.08	2.14	2.22
BV per share (\$)	13.55	14.94	18.40

Efficiency Analysis	2013	2014e	2015e
EBIT* Margin	21.1 %	22.3 %	23.2 %
Net Income* Margin	6.6 %	8.0 %	12.3 %
Asset Turnover	44 %	45 %	45 %
Total Assets / Equity	>600%	>600%	547 %
ROE*	20.4 %	23.3 %	30.1 %

Growth Analysis	2013	2014e	2015e
Revenue	4.1 %	3.8 %	3.3 %
EBIT*	22.8 %	9.7 %	7.6 %
Net Income*	20.4 %	26.0 %	59.5 %
EPS*	19.9 %	26.8 %	58.6 %

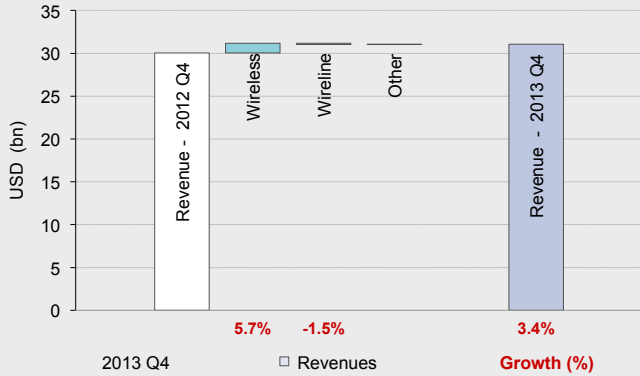
Valuation Ratios	2013	2014e	2015e
P / Sales	1.1	1.1	1.1
EV / EBITDA	2.9	2.7	2.6
P / EBIT*	5.4	4.9	4.6
PE*	17.5	13.8	8.7
PEG*	0.9	0.5	0.1
P / BV	3.5	3.2	2.6
P / FCF	6.4	15.8	9.4
Dividend Yield	4.3 %	4.5 %	4.6 %
Pay-Out Ratio	52.0 %	61.4 %	40.1 %
Net Debt / EBITDA	0.9	0.8	0.6

Valuation Ratios are based on the current share price.

* = Excluding Unusual Items

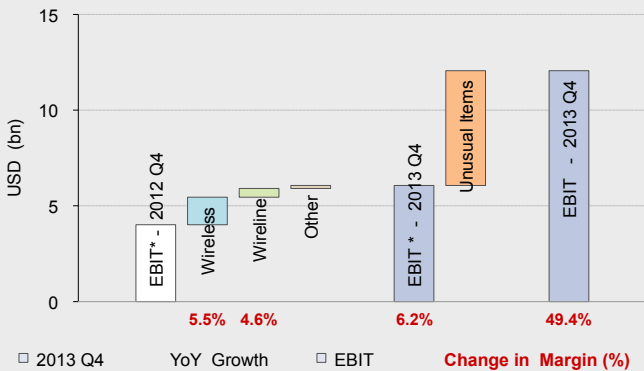
Q4 2013 Results - Changes Since Last Year (YoY)

YoY Change in Revenue



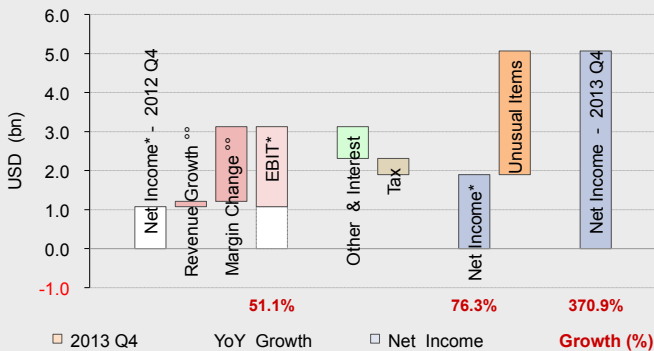
* = Excluding Unusual Items

YoY Change in EBIT* and Margins (%)



Note: Prior year Unusual Items are excluded from analysis in these graphs.

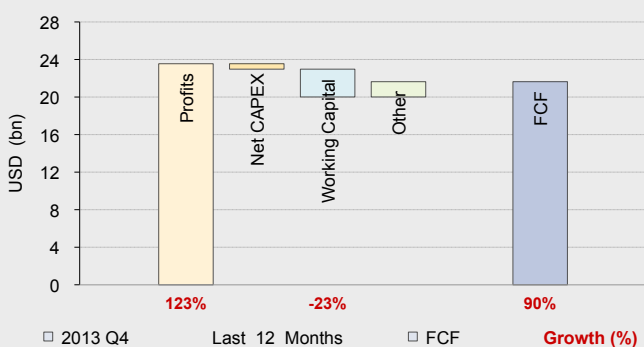
YoY Change in Net Income



°° = Impact on EBIT "Other & MI" = Includes Interest and Minority Items (Vodafone)

"Other Items" includes non-cash charges. Net CAPEX = Depreciation - CAPEX

Free Cash Flows (FCF) - Last 12 Months



Revenues by Division - Q4 2013

- Q4 Total Revenue rose \$1.0 bn (+3%) to \$31.1 bn.
- Wireless Revenue rose \$1.1 bn (+6%) to \$21.1 bn.
 - Post-Paid Accounts was flat at 35.1 m.
 - Post-Paid ARPA rose 7.0% to \$157.2.
 - Connection Per Account rose 0 (+5%).
- Wireline Revenue fell \$145 m (-1%) to \$9.8 bn.
- Other Revenue rose \$34 m (+56%) to \$95 m.

Notes:

- Growth rates and changes are stated on a YoY comparative basis.
- Prior year Unusual Items are excluded from analysis in these graphs.
- Unusual Items relate mostly to Severance, Pension & Benefit Charges.

EBIT by Division - Q4 2013

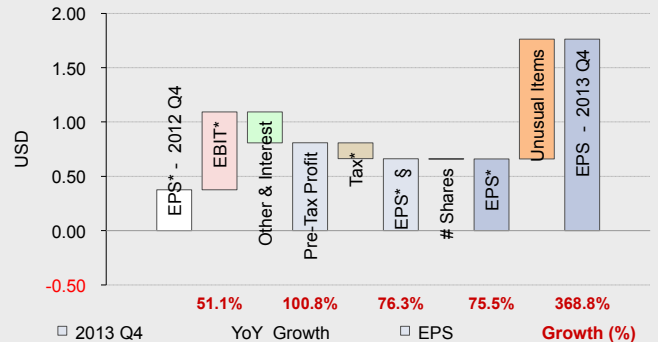
- Q4 Total EBIT improved \$15.2 bn to \$12.1 bn. Margin rose 49.4% to 38.8%.
- \$6.0 bn Unusual Items arose at the EBIT level. -\$7.2 bn arose in Q4 last year.
- Total* EBIT rose \$2.1 bn (+51%) to \$6.1 bn. Margin rose 6.2% to 19.5%.
- Wireless EBIT rose \$1.4 bn (+30%) to \$6.2 bn. Margin rose 5.5% to 29.5%.
- Wireline EBIT improved \$0.5 bn to \$131 m. Margin rose 4.6% to 1.3%.
- Other EBIT improved \$156 m to -\$292 m.

Notes - Unusual Items arising this Q and the prior year Q.

	2012 Q4	2013 Q4
At the EBIT level: (\$ bn)	-7.2	6.0
At the Net Income level: (\$ bn)	-5.3	3.2

§ = EPS before share repurchases / (Issues) # Shares = Share Repurchases / (Issues)

YoY Change in EPS

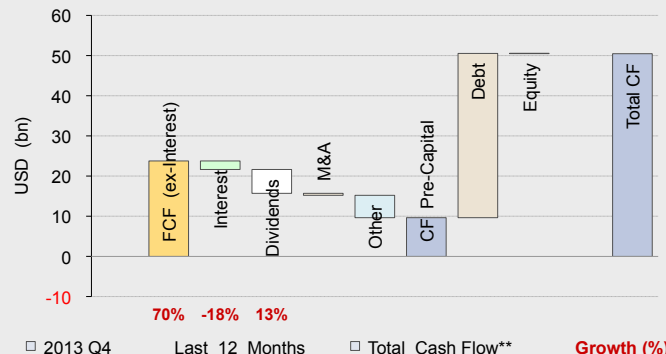


Data is stated on a per share basis.

"Other & MI" = Includes Interest and Minority Items (Vodafone)

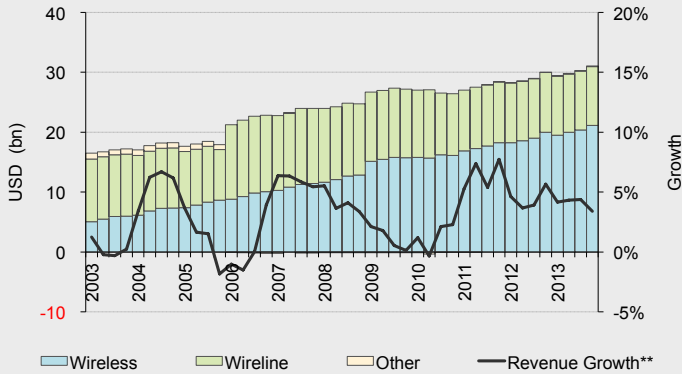
Equity = Share Issues / (Repurchases) CF = Cash Flow

Total Cash Flows - Last 12 Months



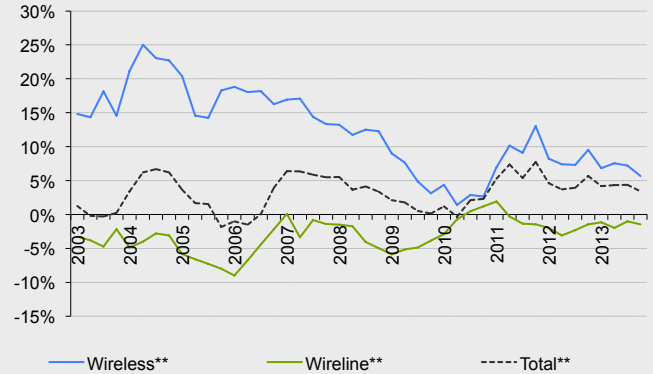
Historical Financial Results - Quarterly Analysis since 2003

Revenue by Division



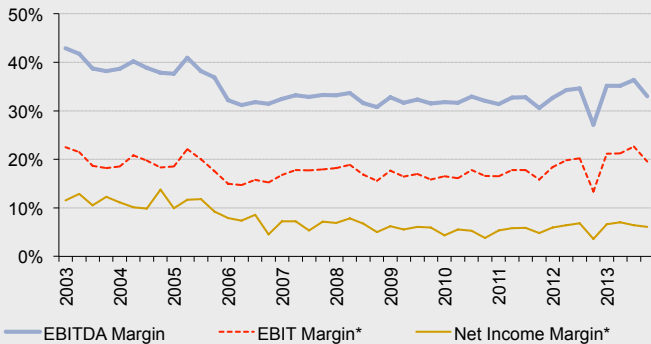
Growth** = Estimated revenue growth excluding major M&A.

Revenue Growth by Division

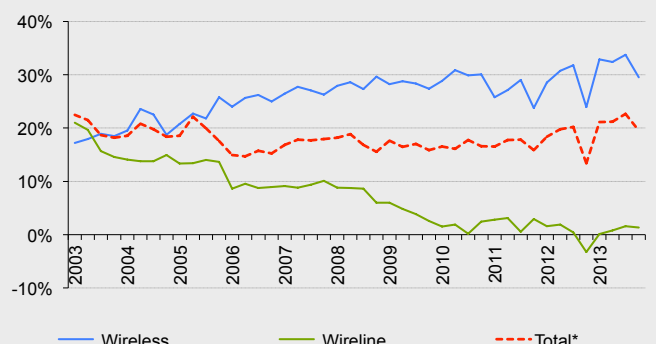


* = Excluding Unusual Items

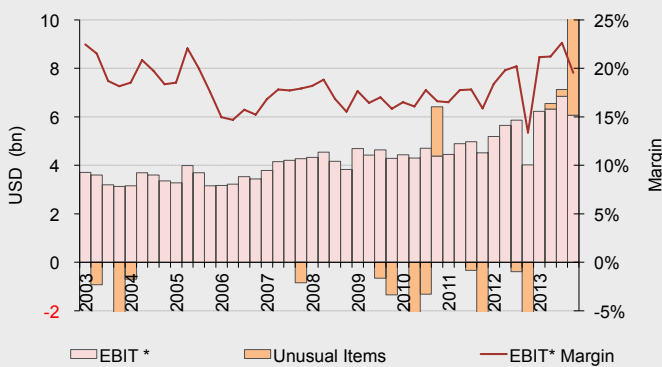
Profit Margins



EBIT Margins by Division



EBIT* & EBIT* Margin



* = Excludes Unusual Items

Key recent acquisitions & disposals:

- 1) In Q2 2005 divested its Directories business.
- 2) In 2006 acquired MCI.
- 3) In 2009 acquired Alltel (wireless operator).

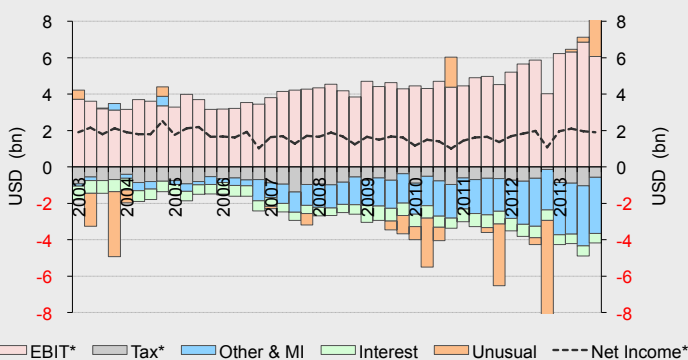
Key recent Unusual Items:

- 2007- 2010 results included a charges related to restructurings, pension costs, severance payments and integration costs.
- 1) Q 2012, a \$7.1 bn pre-tax charge was made to cover the underfunded pension plan and \$1.1 bn for early retirement of debt.
 - 2) Q4 2011, includes a \$5.6 bn severance & pension charges.

* = excludes Unusual Items.

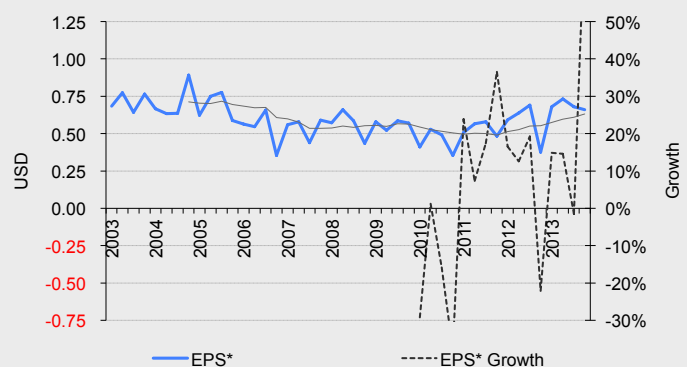
Most Unusual Items relate to one-off and exceptional items. See Company Profile report for more details of Unusual Items.

Net Income Analysis



"Other" includes non-operating items eg. Minority Interest (Vodafone).

EPS* & EPS* Growth



Key Fundamental Drivers

Key long-term, fundamental share price drivers:

(Graph)

- i, ii Share price performance is driven primarily by PE* ratio and dividends; and secondly by EPS* growth (since 2010). This is a contrast to normal share price drivers. Valuation ratios (PE) are at historically high levels.
- iii - v EPS* growth has been driven primarily by EBIT* growth;
- vi See the full report.

PE
↓
Share Price
↑
EPS
↑
Revenue Growth & EBIT Margin

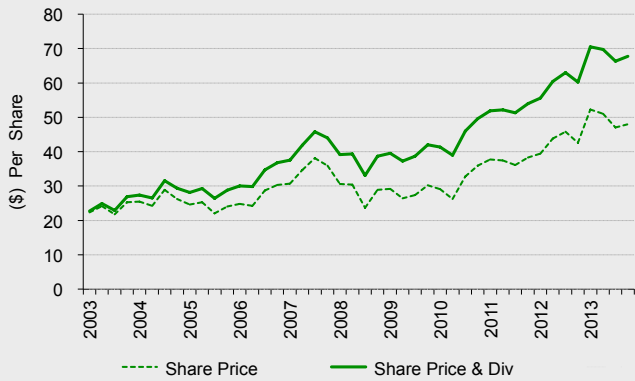
Analysis of fundamentals & EPS drivers:

- See the full report.
- See the full report.
- See the full report.

(see also analysis on next page)

* = Excludes Unusual Items

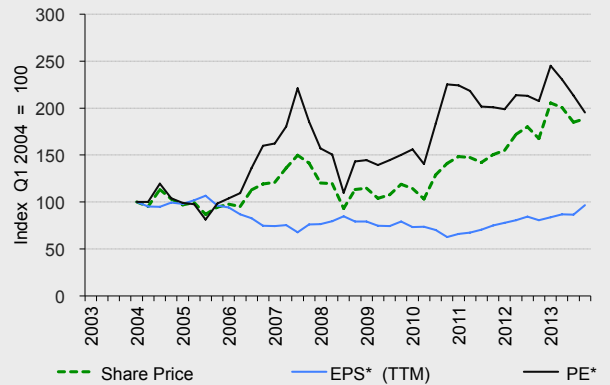
i Share Price & Dividend



§ = On a constant per share basis from Q1 2007.

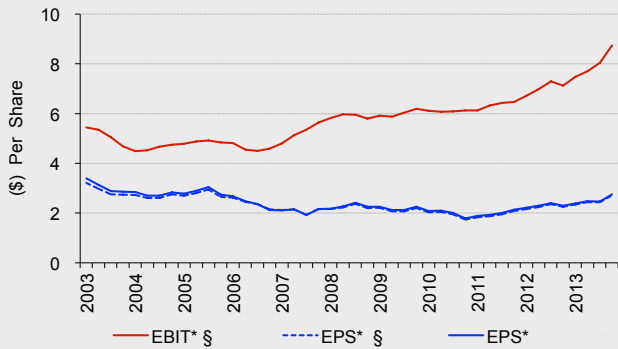
* = Excludes Unusual Items

ii Share Price, EPS & PE

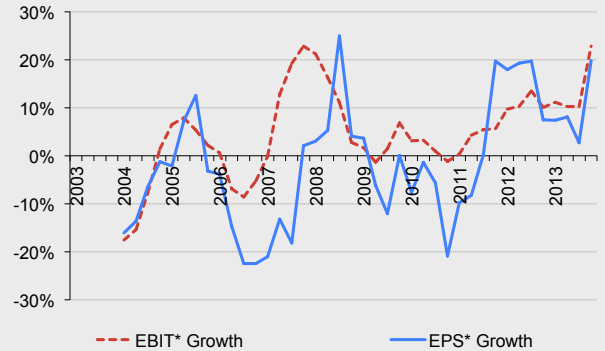


TTM = Trailing 12 months

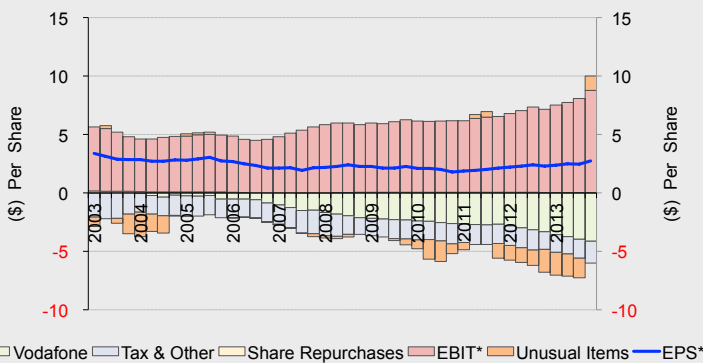
iii EBIT* & EPS* (TTM)



iv EBIT & EPS* (TTM) Growth

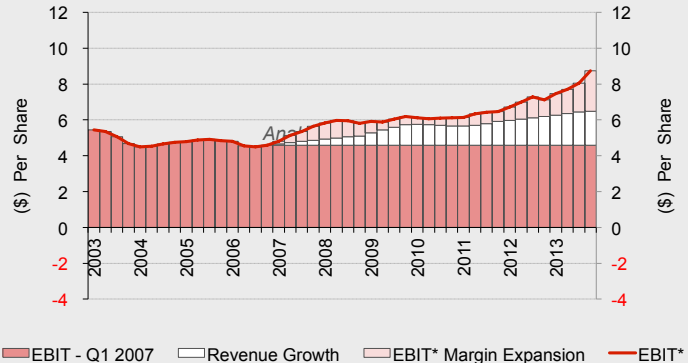


v EPS* \$ (TTM) Drivers



Other = Net Interest & Other Income

vi EBIT* \$ (TTM) Drivers



Key EBIT drivers since Q1 2007.

Valuation

Fundamental Valuation

See the full report.

Fundamental Valuation

§ = Estimates for next 12 Months

Share Price
Dividends Per Share
Return (incl. Div.)

Last 12 Months	Base Case §	Change (%)
----------------	-------------	------------

See the full report.

See the full report.

Key Forecasts:

Revenue Growth
EBIT* Margin
Tax Rate*
EPS*

Last 12 Months	Base Case §	Change (%)
4.1%	3.1%	-1.0%
21.1%	20.6%	-0.5%
14.4%	17.4%	3.0%
2.75	2.67	-3.0%

P / Sales

See the full report.

P / EBIT*

See the full report.

PE*

* = Excluding Unusual Items

Note: See the full Indigo report for a more detailed description of the fundamental valuation.

Fundamental Valuation Methodology

The potential returns under the three scenarios (Bear, Base, Bull Cases) of the Fundamental Valuation above is a calculation based on an estimated change in share price and dividends received. The share price is calculated by multiplying the forecast PE and EPS. In turn, the EPS is calculated based on forecast changes in revenue, EBIT margin, net interest, other income & tax rates, and adjusting for share repurchases. This approach is summarized by the formula:

$$\text{Return} = \text{Dividends} + \Delta \text{Share Price}$$

$$\text{Return} = \text{DPS} + (\Delta \text{PE} * \Delta \text{EPS})$$

$$\Delta \text{EPS} = (((\Delta \text{EBIT} + \Delta \text{Interest} + \Delta \text{Other Income}) * \Delta \text{Tax Rate \%}) / \text{Shares}) * \Delta \text{Shares}$$

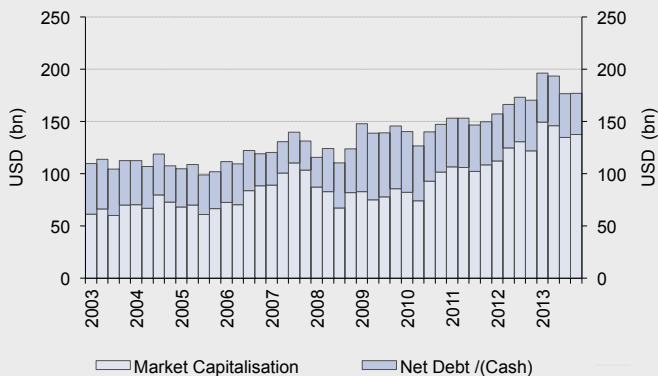
DPS = Dividends Per Share

Δ = Change in a variable

ie. Δ PE = Change in PE ratio

DISCLAIMER: The valuations and return calculations only illustrate the potential returns under the hypothetical conditions described and should not be relied upon for any investment decision. This is not an estimate of what we believe may occur, nor a price target nor a recommendation to buy or sell an investment.

Historical Enterprise Value



* = Excludes Unusual Items

DCF Valuation

Current Share Price	(\$)	48.0
WACC		7.2%
→ DCF Valuation	(\$)	See the full report.

Sensitivity analysis:

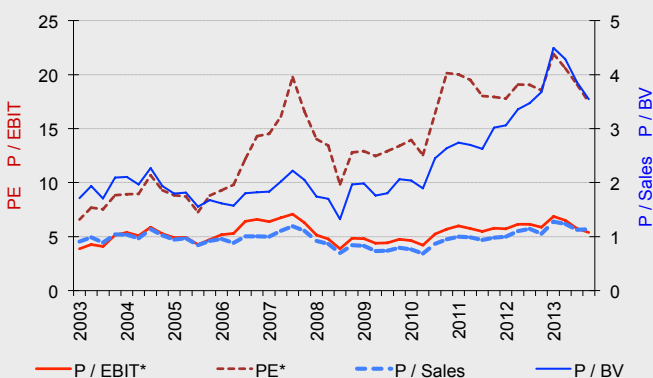
The current share price of \$48.00 and FCF in year 1 of \$3.76 imply the following ranges for FCF growth into perpetuity and WACC:

WACC	See the full report.
FCF Growth into perpetuity	See the full report.

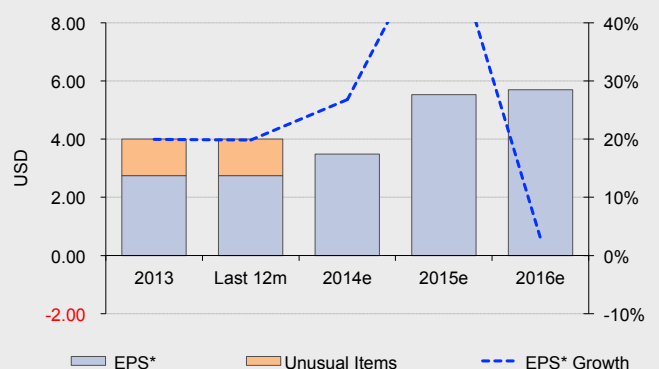
DCF Formula: $PV = FCF / (WACC - g)$

Disclaimer: DCF valuation is only an illustration of potential valuation.

Historical Valuation Multiples



Consensus Forecasts - EPS



Contents of the Full "Company Profile" Equity Research Report

The full (52 page) Company Profile equity research report can be purchased from our website.
www.indigo-equity-research.com

Description	Page
Investment Thesis & SWOT Analysis	Page 1
Contents	Page 2
News Flow - Significant Recent Events	Page 3
USA Telecoms Industry Current Events	Page 4
Company Analysis	
US Telecoms Industry Overview & Key Themes for 2013	Page 5
Verizon - Company Background Information	Page 6
Management, Executive Compensation & Board	Page 7
Balance Sheet & Pension Issues	Page 8
Description of Operating Divisions	Page 9
Business Model - Results for the Last 12 Months	Page 10
SWOT Analysis	Page 11
Key Current Investment Issues	Page 12
Key Fundamental Drivers	Page 14
Historical Financial Results - Quarterly Analysis since 2003	
Profit & Loss Summary	Page 18
Revenue Analysis	Page 19
Wireless Operational Data - Subscribers	Page 20
Wireless Operational Data - ARPA	Page 21
USA Wireless - Competitor Analysis	Page 22
Wireline Operational Data	Page 23
EBITDA & EBIT Analysis	Page 24
Operating Cost Analysis	Page 25
Book Value, Tax & CAPEX Analysis	Page 26
Cash Flow Analysis	Page 27
Balance Sheet Analysis	Page 28
Return Analysis	Page 29
Unusual Items	Page 30
Valuation	
Fundamental Valuation of Verizon	Page 33
DCF Valuation & Reality Check	Page 34
Historical Valuation Multiples	Page 35
Consensus Forecasts & Valuation Multiples	Page 36
Industry Analysis	
Overview of the US Telecoms Industry	Page 38
Key US Telecoms Trends & Drivers	Page 39
Recent USA Regulatory Issues	Page 43
A brief history of the US Telecoms Industry	Page 43
Description of Telecoms Services	Page 44
Telecoms Glossary	Page 44
Tables of Historical Financial Results	
Quarterly & Annual Financial Accounts	Page 46
Revenue, EBITDA, EBIT & Operational Data	Page 47
Explanations, Legal and Important Information	Page 52

Explanations

Brief business description - Verizon

Verizon is a large US integrated telecommunications operator, providing fixed line, mobile, internet & IT services. Verizon has a national wireless presence, fixed line presence in 25 states and global data network (ie. MCI). Its main offices are in New York. It has about 190,000 employees and is a component of the S&P 500 index.

Explanation of Company Ratings used by Indigo Equity Research Ltd:

Industry View: ATTRACTIVE

Industry View = This is an assessment from an investor's perspective of the potential for the industry as a whole to generate profits in the future based on criteria such as: market structure (eg. number of competitors and industry concentration), growth prospects, maturity (stage of the industry life cycle), regulations, technology, disruptive forces, expected changes and speed of any changes.

Company Rating:

	LOW	MED.	HIGH
Risk			
Quality			
Valuation			

Risk = The risk of earnings disappointment & volatility as well as the risk of a change in the valuation ratios that impact the company's share price. This depends on items such as revenue growth, profit margin volatility, investor sentiment towards the company etc..... But this does not include the market risk of these elements changing.

Quality = The quality of the company reflects its ability to maintain or increase earnings from its competitive advantages, strategy, brand, management, market position, pricing power, services etc.....

Valuation = This is an absolute measure of valuation multiples of the company, based on a range of metrics (multiples) such as: P/Sales, PE, PEG, P/BV, P/FCF, EV/EBITDA, EV/Sales, Div Yield

Comment on Ratings: These qualitative assessments of "Company Ratings" are made for each company on a relative basis compared to other companies with large capitalizations; but are nonetheless subjective and dependent on the analyst's individual opinion & analysis of the company.

Financial definitions & abbreviations:

FCF = Free Cash Flow

Op FCF = Operating Free Cash Flow

EBIT = Earnings Before Interest & Tax

EBITDA = Earnings Before Interest, Tax, Depreciation & Amortisation

TTM = Trailing 12 Months

Last 12m = Last 12 months

y/e = (financial) year end

EV = Enterprise Value

P = (Share) Price

PE = Price / Earnings

PEG = PE / Growth

BV = Book Value

Div. = Dividend

EPS = Earnings Per Share

DPS = Dividends Per Share

Explanation of what constitutes an unusual or significant item: Indigo Equity Research determined what constituted "Unusual items" in this report on the basis of assessing what items were significantly or materially separate or different to the Company's core business and activities. This is a highly subjective assessment made by the analyst on a case-by-case basis.

Legal and Important Information

Copyright © 2014 Indigo Equity Research Limited

Analyst certification: The analyst Nicholas Landell-Mills primarily responsible for the preparation of this research report attests to the following: (1) that the views and opinions rendered in this research report reflect the views of Indigo Equity Research Limited about the subject companies or issuers; and (2) that no part of the research analyst's compensation was, is, or will be directly related to the specific recommendations or views in this research report.

Disclosures: Indigo Equity Research Limited has no investment banking or share trading operations or activities. Reports are prepared at irregular intervals depending on the analyst's judgment. Analysts, associates and members of their households may maintain a financial interest in the securities of companies in the analyst's area of coverage, subject to compliance with applicable regulations. Indigo Equity Research prohibits analysts, associates and members of their households from serving as an officer, director, advisory board member or employee of any company that the analyst covers. Analysts aim to provide appropriate information on companies. Analysts do not provide any BUY, HOLD, or SELL recommendations in their research and the research reports should not be interpreted as providing such recommendations. Indigo Equity Research does not provide individually tailored investment advice in research reports. This report has been prepared without regard to the particular investments and circumstances or investment objectives of the recipient. Securities and other financial instruments discussed in this report are not deposits and are not insured by any institution. (such as the Federal Deposit Insurance Corporation). This report is not intended for distribution to, or use by any person or entity in any jurisdiction or country where such distribution or use would be contrary to local law or regulation. These disclosures should be read in conjunction with the Disclaimer and Important Information below.

Disclaimer and Important Information: This document has been prepared by Indigo Equity Research Limited for information and illustration purposes only. This document is not an offer, or the solicitation of an offer, to buy or sell a security or enter into any other agreement. This document does not contain an investment recommendation and is not a complete or comprehensive description of a company. Any projections, forecasts or estimates of potential risk or return or financial results are only illustrative and should not be taken as limitations of the maximum possible loss or gain. The information is provided in this document at the date of preparation and is subject to change. While this information has been obtained from sources believed to be reliable, we do not represent that it is accurate or complete and should not be relied on as such. Indigo Equity Research Limited, its directors and employees, can accept no liability or responsibility for any direct, indirect or consequential loss arising from use of this document or its contents. Past performance is no indication of future results. Real results may vary from forecasts. Historic price performance may be presented in a currency other than the currency of the country in which you reside. Your actual return on this product may increase or decrease with fluctuations between currencies and market conditions. The securities and companies discussed in this document may not be suitable for all investors. It is recommended that investors independently evaluate each security, company or instrument discussed in this document, and consult other independent advisors. This document is directed at persons and investment professionals and have considerable experience in matters relating to investments, and equity analysis and research. This report must not be acted on or relied on by persons who are not experienced investment professionals. Indigo Equity Research Limited is not regulated by any financial services authority. This document may not be reproduced, distributed or published by any person for any purpose without Indigo Equity Research Limited's prior written consent.

Indigo Equity Research Limited ("Indigo Equity Research") is registered in England, Company No. 7315966. Address: Vintage Yard, 59-63 Bermondsey Street, London SE1 3XF, UK. Website: www.indigo-equity-research.com and contact email: info@indigo-equity-research.com.